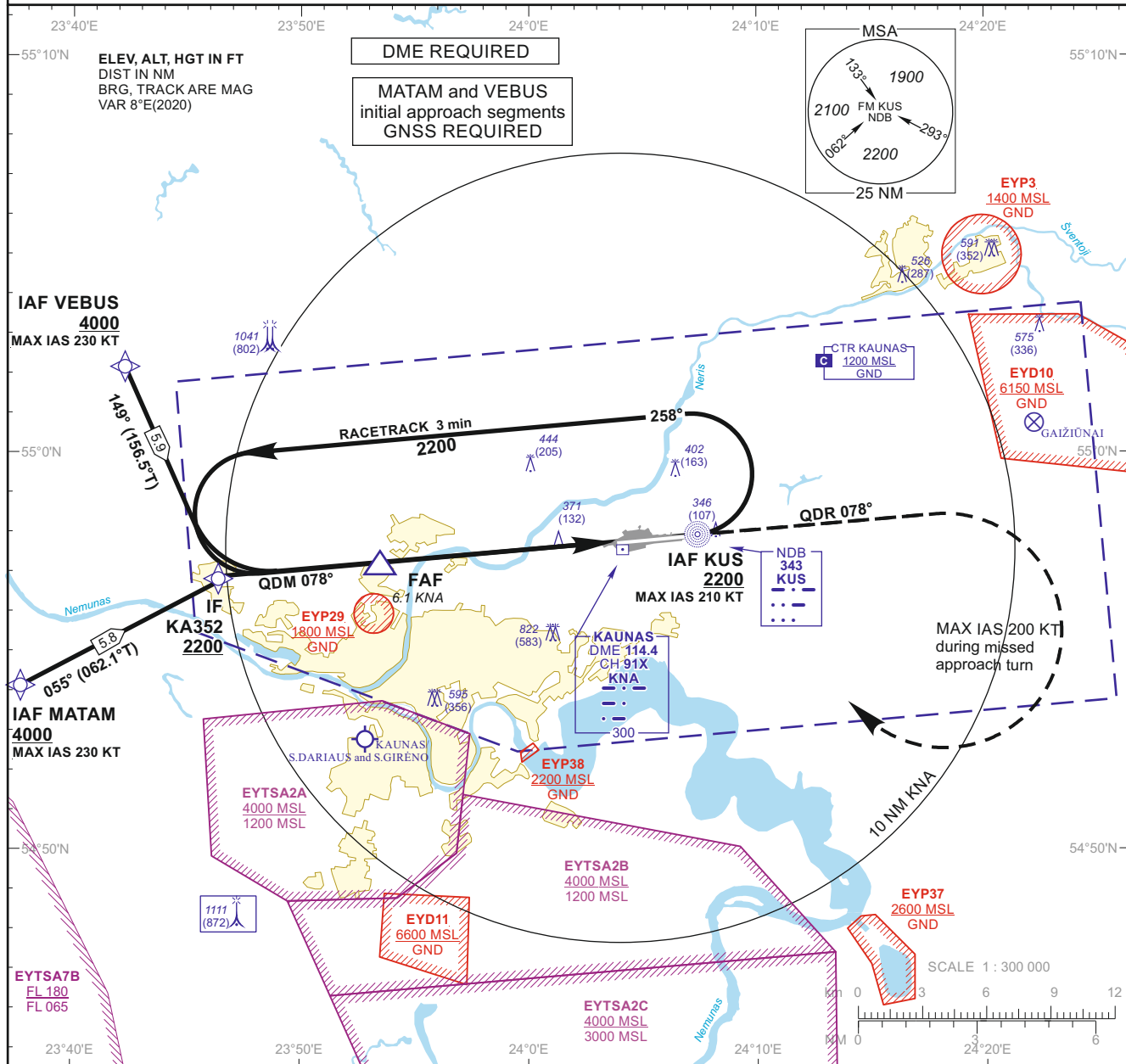
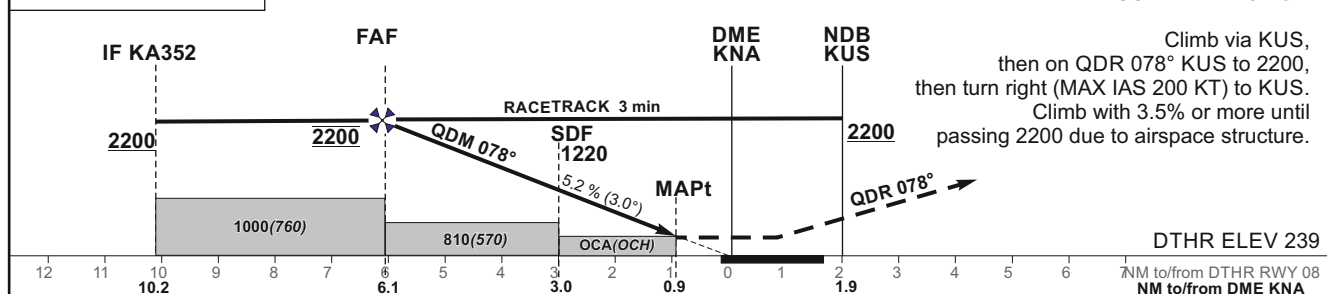


INSTRUMENT
APPROACH
CHART - ICAOAERODROME ELEV 259
HEIGHTS RELATED TO
DTHR RWY 08 - ELEV 239TWR 124.205
118.505
ATIS 129.055KAUNAS
NDB Y RWY 08
(CAT C/D)

TRANSITION ALT 5000

MISSED APPROACH



OCA(OCH)		C	D	DIST DME KNA		5	4	3	2			
STRAIGHT-IN APPROACH	NDB	630 (390)		Altitude		1850	1530	1220	900			
	NDB (when SDF not recieved)	810 (570)		Height		(1611)	(1291)	(981)	(661)			
CIRCLING		1230 (970)	not authorized	Timing not authorized for defining the MAPt								
				GS		Kts	80	100	120	140	160	180
				FAF - MAPt 5.2 NM		min:sec	3:54	3:07	2:36	2:14	1:57	1:44
				Rate of descent (5.2%)		ft/min	415	520	625	730	835	940
				For data tabulation see verso								

Changes: EYP37 and EYP38 added.

24 FEB 2022

©2019 ORO NAVIGACIJA

AIRAC AMDT 001/2022

INSTRUMENT
APPROACH
CHART - ICAO

AERODROME ELEV 259
HEIGHTS RELATED TO
DTHR RWY 08 - ELEV 239

TWR	124.205
	118.505
ATIS	129.055

KAUNAS
NDB Y RWY 08
(CAT C/D)

TABULAR DESCRIPTION

IAF MATAM, INITIAL APPROACH

Serial Number	Path Descriptor	Waypoint Identifier	Fly-over	Course/Track °M(°T)	Magnetic Variation	Distance (NM)/ Time	Turn Direction	Altitude (FT)/ Flight level	Speed (KT)	VPA/TCH	Navigation Specification
001	IF	MATAM	—	—	-7.5	—	—	+4000	-230	—	RNAV 1
002	TF	KA352	—	055(062.1)	-7.5	5.8	—	+2200	—	—	RNAV 1

IAF VEBUS, INITIAL APPROACH

Serial Number	Path Descriptor	Waypoint Identifier	Fly-over	Course/Track °M(°T)	Magnetic Variation	Distance (NM)/ Time	Turn Direction	Altitude (FT)/ Flight level	Speed (KT)	VPA/TCH	Navigation Specification
001	IF	VEBUS	—	—	-7.5	—	—	+4000	-230	—	RNAV 1
002	TF	KA352	—	149(156.5)	-7.5	5.9	—	+2200	—	—	RNAV 1

NDB INSTRUMENT APPROACH from IAFs(KUS, MATAM, VEBUS)

FIX/POINTS	COORDINATES	FIX FORMATION
MATAM (IAF)	54 54 08.9N 023 37 22.7E	BRG 070.25° KUS / 15.74 NM KNA
VEBUS (IAF)	55 02 19.2N 023 42 11.7E	BRG 099.50° KUS / 13.40 NM KNA
KUS (IAF)	54 57 56.6N 024 07 18.7E	1.94 NM KNA
KA352 (IF)	54 56 52.8N 023 46 18.3E	BRG 077.59° KUS / 10.22 NM KNA
FAF	54 57 14.9N 023 53 23.4E	BRG 077.61° KUS / 6.12 NM KNA
SDF	54 57 31.4N 023 58 48.3E	BRG 077.61° KUS / 3.00 NM KNA
MAPt	54 57 42.3N 024 02 28.0E	BRG 077.61° KUS / 0.88NM KNA
DTHR RWY 08	54 57 46.44N 024 03 50.94E	
KNA	54 57 37.4N 024 03 59.1E	

Final approach descent angle: 3.00°

Changes: new chart.